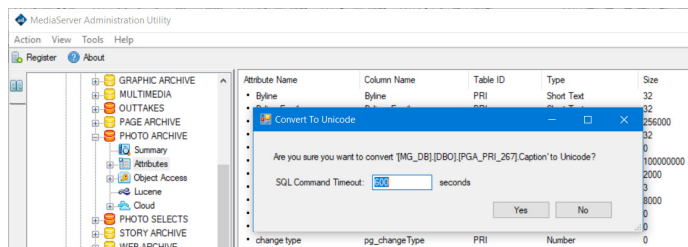


## Software as a Service (SaaS)

- SCC MediaServer 12 software, including all modules and user licences are provided as a Software-as-a-Service (SaaS) model, with zero up-front purchase cost.
- SaaS monthly charges are based on STANDARD, EXTENDED and CLOUD Infrastructure support levels, with a minimum one-year contract billed in advance.
- STANDARD support provides telephone and helpdesk support from 9am-6pm EST on business days (Mon-Fri except holidays).
- EXTENDED support includes STANDARD support and increases support hours to 24 x 7 x 365
- CLOUD Infrastructure support includes STANDARD and EXTENDED support and adds maintenance support for Amazon EC2/S3 Cloud infrastructure (system monitoring, server & database patching, database and file system backups, plus monthly full restore.)

## Unicode (wide character) support

- SCC applications now utilize Unicode UTF-16 (wide character) encoding as standard for internal data processing, enabling support for all character sets and all languages with extended double-byte characters (Hindi, Japanese, Chinese etc.)
- MediaServer Library attributes can be easily configured to support the storage of Unicode wide character data.



- SCC MediaServer Search engine supports indexing and retrieval of Unicode data, including search term highlighting.

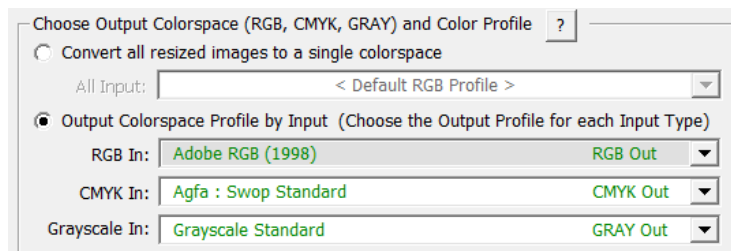
## Cloud Storage Module New Functionality

- SCC Cloud Storage upload and download services now support multi-part transfers, greatly reducing the time taken to upload and download large files to and from Amazon S3, in the case of high-definition video transfers for example.
- SCC Cloud Storage upload and download services now support AWS transfer acceleration, if this option has been enabled on the AWS S3 bucket.

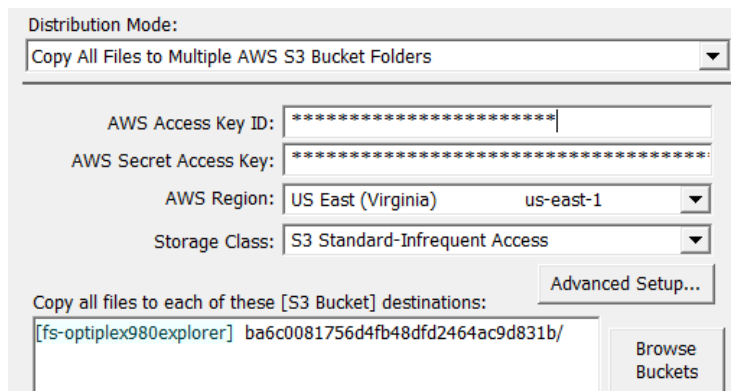
## SCC MediaFactory New Functionality

- SCC MediaFactory now supports custom IPTC field lengths overriding the legacy maximum field lengths originally required by the IPTC and which are enforced by older versions of the Adobe apps (Photoshop, Bridge etc.)

- Supports Unicode (wide character) encoding as standard.
- Enhanced PSD file support, now supports multi-channel and multi-layer PSD images.
- Adds support for Canon CRAW (CR3) digital camera images.
- Adds support for Apple High Efficient Image format (HEIC).
- Image Processing channel Resize facility now supports the selection of an output colorspace and associated ICC profile.



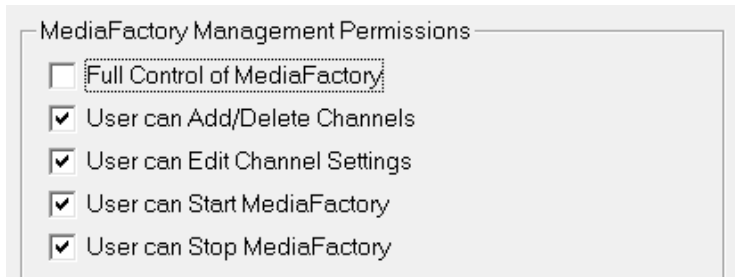
- Distribution channel now supports the move and rename of matching file pairs, where the new filename is extracted from a node within the sidecar text/xml file.
- Distribution channel now supports the use of AWS S3 buckets and sub-folders as valid output destinations. Supports the selection of a target S3 bucket storage class, the use of AWS multi-part uploads, and AWS transfer acceleration mode.



- Delivery channel now supports a new "from parent" SCC Attribute template function allowing field values to be extracted from the parent record whenever "related" objects are being delivered.
- Delivery channel now supports a new Group "AsJsonObject" template function allowing a simple list of SCC Attributes to be automatically formatted and properly escaped as valid JSON upon export.
- Delivery channel now supports an option to reference "RelatedObjects" as a valid JSON construct forming part of a parent record being exported as JSON. One use of this feature is to reference a gallery of images linked to a story assignment, when the parent story assignment is being exported in JSON format to WordPress.
- Assignment Harmonizer channel adds the ability to add custom filtering to the parent assignment record and/or to the child object records, in order to determine a more

efficient match. Older assignment records can be exempted from the harmonizer check process for example.

- Access to the MediaFactory console can now be optionally protected using an authenticated SCC user login. The SCC user manager utility now allows permissions to be set to one of more users/roles, which allow MediaFactory to be stopped or started, allow channels to be created or deleted, and allow channel settings to be modified. MediaFactory can also be configured to auto-logout the user after a period of time, forcing the user to relogin in order to make further changes.

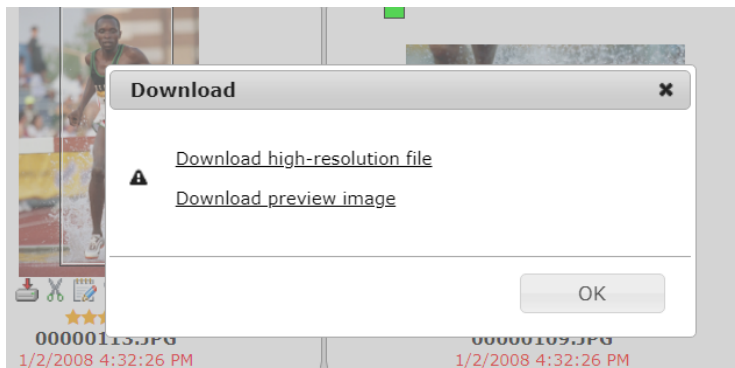


### SCC MediaGrid New Functionality

- SCC MediaGrid now supports custom IPTC field lengths overriding the legacy maximum field lengths originally required by the IPTC and which are enforced by older versions of the Adobe apps (Photoshop, Bridge etc.)
- Supports Unicode (wide character) encoding as standard.
- Text export facility now adds the ability to control the format of date and time fields within the exported text file.
- Text export facility now allows a qualifying field and value to be used automatically when selecting the export definition. For example records containing a certain value in the qualifying field could be exported in one format while other non-matching records are exported in another format.

### SCC Web Client New Functionality

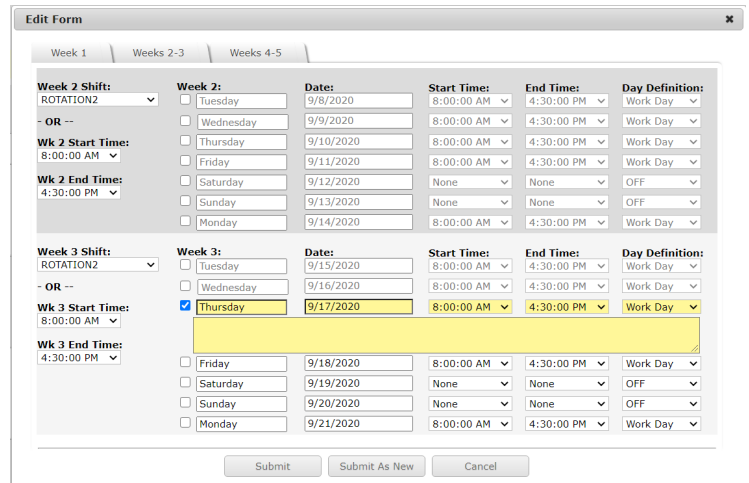
- Supports Unicode (wide character) encoding as standard.
- Anonymous user access now supports IP filtering. An IP whitelist file supports the entry of individual IP addresses, and/or a combination of wildcard and range address entries. When the IP whitelist has been loaded, users connecting to the login page from a matching remote IP address are either automatically logged in with the anonymous credential, or have the option of logging in anonymously via a guest access button. Non-whitelisted users can only connect with a specific credential, anonymous access is revoked.



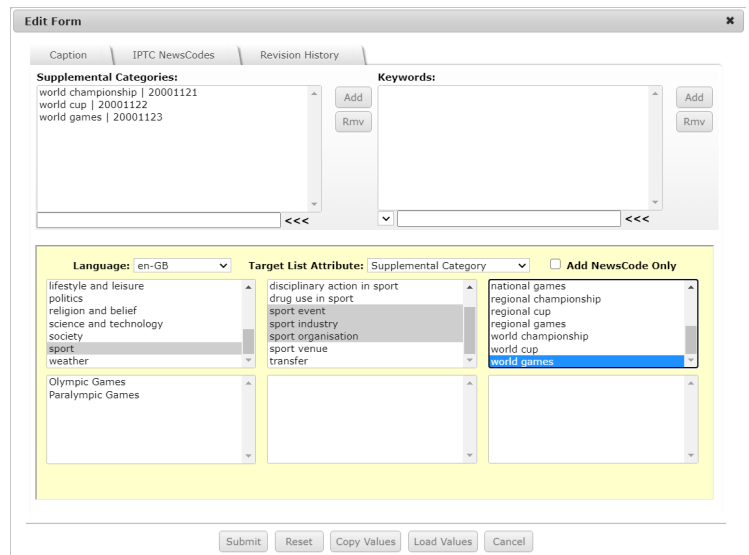
- Object downloads now support an optional download dialog,

allowing the user to download either the preview image, or the high-resolution file. The download dialog can be enabled system wide, or for one or more user roles, or disabled.

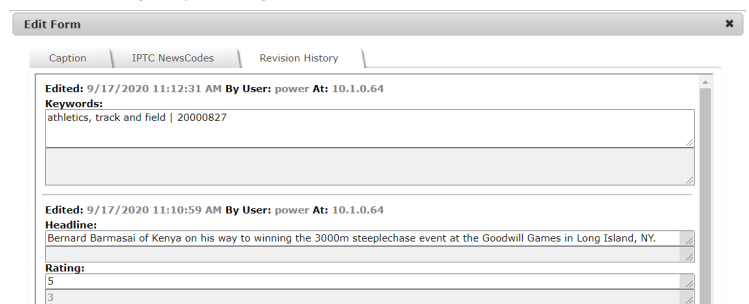
- Preview downloads now support embedding metadata into the downloaded preview image.
- Result and detail page highlighting can now be controlled at the attribute (field) level, rather than on or off for all attributes.
- Record create and edit forms are now "tabbed" allowing for smaller forms and more efficient use of the screen.



- Record create and edit forms now include an IPTC NewsCodes keyword entry facility, supporting all 10 languages provided by the IPTC.



- Record edit forms now include a revision history viewer, allowing any changes to that records metadata to be viewed.

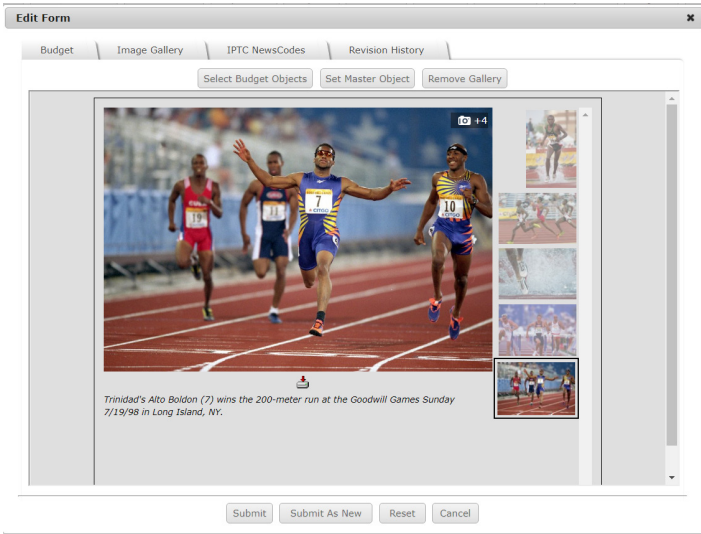


- Result page now provides a new slideshow facility, supporting full screen display, and automatic playback.

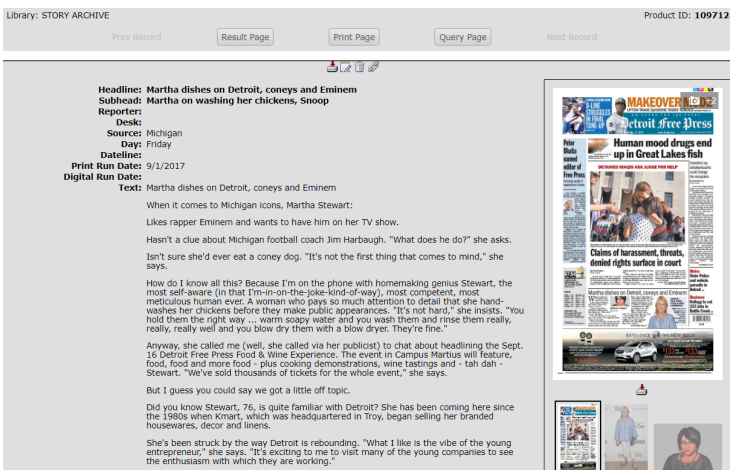


## SCC Assignment Module New Functionality

- Budget and story assignment forms now support the creation of linked object (image/video) galleries, where any object in the gallery can be marked as the main (poster) image.

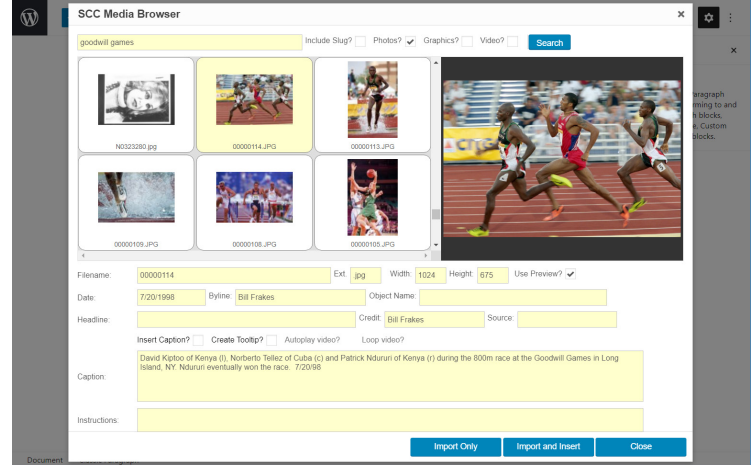


- The gallery is linked to the budget or story assignment record, and is viewable from the detail page. When the budget or story assignment record is delivered/exported, the gallery data (xml/json) can be included, allowing downstream content management systems to reference the linked objects referenced within the gallery data structure.
- The gallery viewer can also be used to display any objects (pages, photos, graphics) linked to stories or other records.

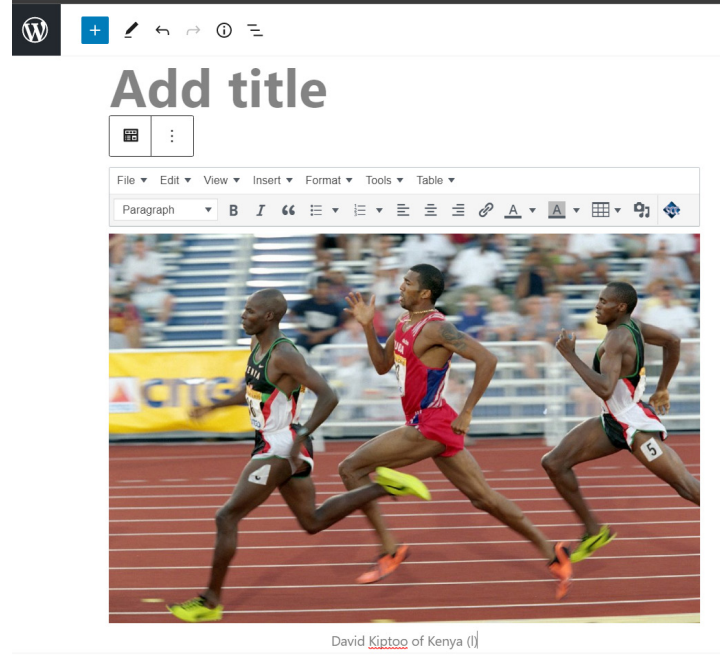


## WordPress Integration

- New WordPress plugin attaches to the paragraph text editor and allows searches to be performed against one or more SCC MediaServer libraries.



- Selected objects can be imported into a WordPress media library only, or imported and simultaneously placed into the current document.
- Supports the import of either the preview image or the high-resolution original object.
- Allows the dimension of the object to be adjusted prior to placement.
- Includes options to generate a tooltip based on caption data.
- Includes options to set autoplay and/or loop on placed video objects.



Document → Classic Paragraph